

# STONE MOUNTAIN PLAZA

*FEATURING*

## **STONE MOUNTAIN CENTER**

9801 Xenia Ave N  
Brooklyn Park, MN 55443

Now Leasing

## **STONE MOUNTAIN PROFESSIONAL**

9985 Xenia Ave N  
Brooklyn Park, MN 55443

Construction TBD

**Spaces Available**

**Call 763-600-6030 to inquire.**

# BROOKLYN PARK, MN



TARGET

**STONE  
MOUNTAIN  
PLAZA**

**HuVee.**

Zane Avenue





# STONE MOUNTAIN PLAZA



Opened June 2018

**Stone Mountain Center**

Now Leasing  
\$25 / sq. ft. + Tax & CAM



Opened February 2019

**Stone Mountain Professional**

Construction TBD



Opened February 2020





# STONE MOUNTAIN CENTER NOW LEASING!



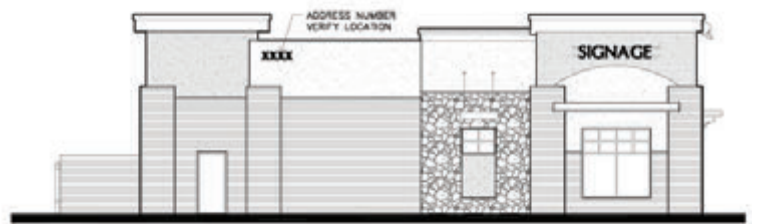
# STONE MOUNTAIN CENTER



North Elevation



West Elevation

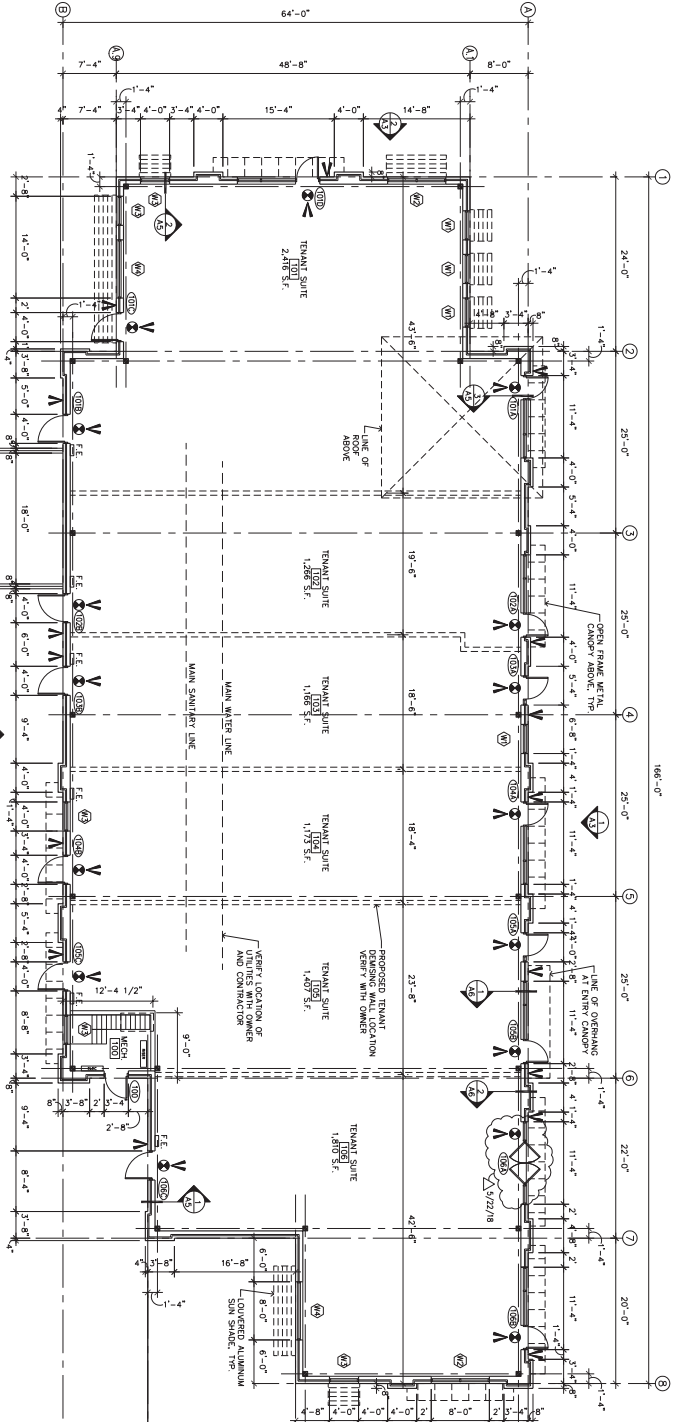
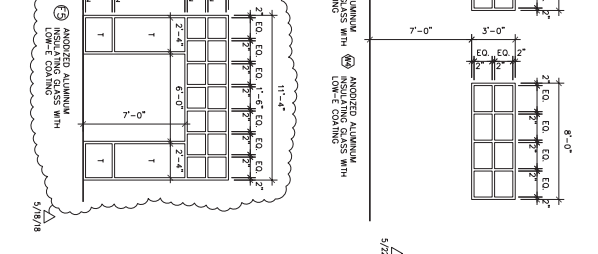
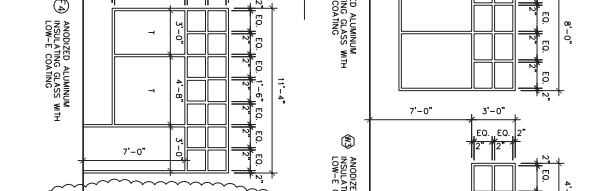
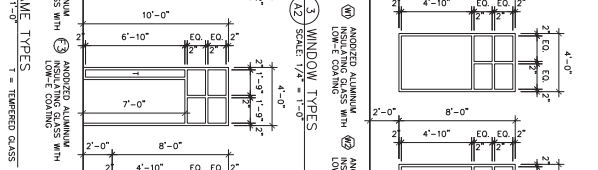
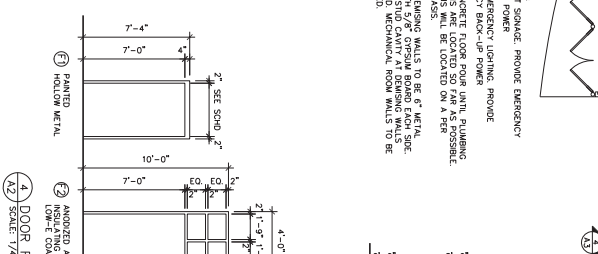
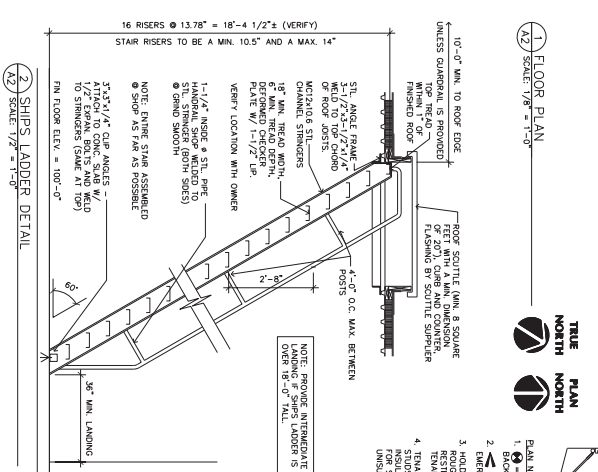


East Elevation



South Elevation





**DOOR & FRAME SCHEDULE**

DR #	DOOR SIZE	THICK	DOOR FRAME REMAINS
100	3'-0" x 7'-0"	1 3/4"	01 - INSULATED
101	3'-0" x 7'-0"	1 3/4"	01 - INSULATED
102	3'-0" x 7'-0"	1 3/4"	01 - INSULATED
103	3'-0" x 7'-0"	1 3/4"	01 - INSULATED
104	3'-0" x 7'-0"	1 3/4"	01 - INSULATED
105	3'-0" x 7'-0"	1 3/4"	01 - INSULATED
106	3'-0" x 7'-0"	1 3/4"	01 - INSULATED
107	3'-0" x 7'-0"	1 3/4"	01 - INSULATED
108	3'-0" x 7'-0"	1 3/4"	01 - INSULATED
109	3'-0" x 7'-0"	1 3/4"	01 - INSULATED
110	3'-0" x 7'-0"	1 3/4"	01 - INSULATED
111	3'-0" x 7'-0"	1 3/4"	01 - INSULATED
112	3'-0" x 7'-0"	1 3/4"	01 - INSULATED
113	3'-0" x 7'-0"	1 3/4"	01 - INSULATED
114	3'-0" x 7'-0"	1 3/4"	01 - INSULATED
115	3'-0" x 7'-0"	1 3/4"	01 - INSULATED
116	3'-0" x 7'-0"	1 3/4"	01 - INSULATED
117	3'-0" x 7'-0"	1 3/4"	01 - INSULATED
118	3'-0" x 7'-0"	1 3/4"	01 - INSULATED
119	3'-0" x 7'-0"	1 3/4"	01 - INSULATED
120	3'-0" x 7'-0"	1 3/4"	01 - INSULATED

**STONE MOUNTAIN CENTER**  
Stone Mountain Plaza - Brooklyn Park, Minnesota

Project: Stone Mountain Center  
Drawn by: ULS  
Checked by: ULS  
Date: 4/27/18  
CITY: SHAWANO, WI

**STONE MOUNTAIN CENTER**  
Stone Mountain Plaza - Brooklyn Park, Minnesota

**LAMPERT ARCHITECTS**  
450 Summit Avenue  
St. Paul, MN 55102  
612.291.1100  
lambert@lambert-arch.com

ARCHITECT CERTIFICATION:  
I, EDWARD LAMPERT, being duly sworn, depose and say that I am the principal architect of the above entitled project and that I have prepared the above drawings and specifications and that I am a duly licensed architect in the State of Minnesota.

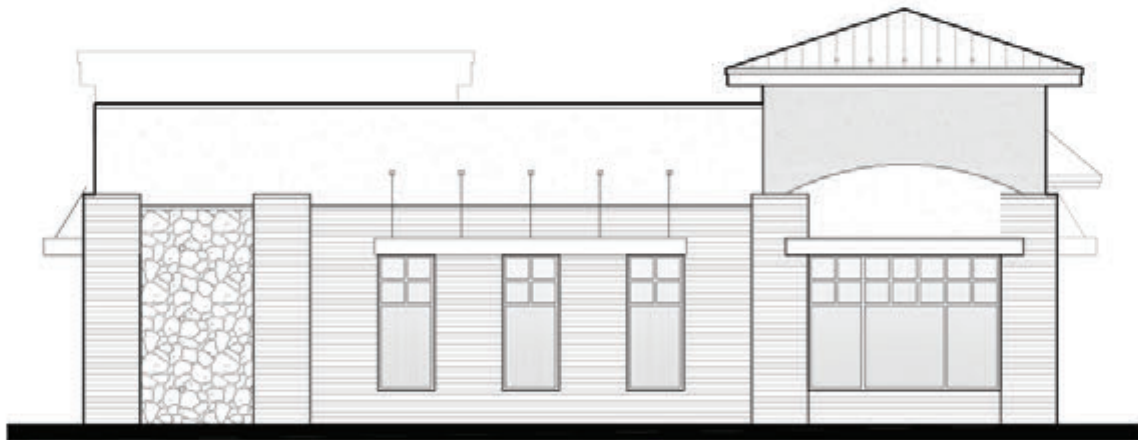
EDWARD LAMPERT  
DATE: 4/27/18

070-3000-0001-03 Page 6 of 8

# STONE MOUNTAIN PROFESSIONAL



South Elevation



West Elevation



North Elevation

